



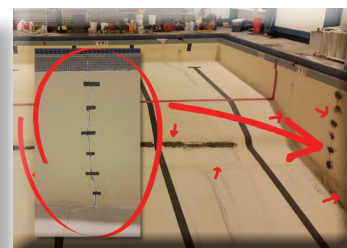
# Si View Pool is on borrowed time. The community has outgrown the aging facility.



*Extensive waitlists  
for lessons*

**Si View Pool was built in 1938 to serve a community of 600 residents.** Today, Si View Park District population is 17,000 (2023 ESRI estimate) and the overall Snoqualmie Valley service area much greater. Snoqualmie Valley has a startling service gap in public aquatic services. Si View Pool programs have extensive waitlists for learn to swim programs. In 2022, 5,329 students participated in swim lessons while 3,104 students were left on waitlists.

**After 85 years of service,** Si View pool's mechanical systems are at the end of their useful lifespan and at risk of shutting down due to aging infrastructure. Over time, the pool has developed large cracks. In 2016 temporary repairs were completed to slow down the spread of cracking. While the repairs underneath the liner are not visible to pool visitors, the cracks are cause for concern as draining the pool may cause them to expand further. Draining the pool periodically is necessary for routine maintenance such as replacing pool drains.



**Swimming is a life skill, particularly in a community surrounded by rivers. Access to learn to swim and water safety programs is essential.**



## Si View Metro Parks is proposing a new community pool to replace the aging Si View Pool facility.

A new pool, that can better meet community needs, is a high priority for District residents. The proposed pool will preserve and improve public access to aquatic programs, expand capacity, and address the gap in aquatic services for the growing population in the District.

**Proposition 1** is a capital bond measure that authorizes funding to support the design and construction of a new community pool in North Bend.

**Capital measures require 60% voter approval.**



# Proposition 1 • November 7, 2023

## Project funding plan

- Proposition 1 would fund \$21.3M of the estimated \$30.3M overall cost of the project.
- Nearly 30% of the project costs are funded by grants and savings including a \$4M grant from the King County Parks Levy Grant program, \$1.5M from Si View Capital Improvement Projects Fund, and \$3.5M from other regional grant sources.

## Proposition 1

to replace the Si View Pool to preserve public aquatic access is on the November 7, 2023 Ballot. Capital measures require 60% voter approval.

The estimated impact to District taxpayers is \$10.67 per month on a home with the average assessed value.

Visit [www.siviewpark.org/newpool.phtml](http://www.siviewpark.org/newpool.phtml) for project details.



Contact us with questions at (425) 831-1900 or email [info@siviewpark.org](mailto:info@siviewpark.org)



**The new community pool is designed to adapt to changing community needs.**

**The proposed pool concept can accommodate a diverse range of activities for all ages and abilities in multiple zones that can operate at the same time.**

Planned components include a lap lane area with four 25-yard lanes, flexible space with areas for learn-to-swim, recreation, therapeutic and fitness programs with an accessible, zero-depth entry for people with mobility issues. Other areas include dry spaces for classroom training and community programs, changing rooms, restrooms, and associated office, maintenance and storage spaces.



**After funding is secured, the concept plan will be developed into a detailed project design with input from the community.**

**The proposed plan increases the bather load of the pool from 60 to 260 people.**

With programs happening concurrently in different areas, the new pool can operate efficiently with minimal transition times and expanded activity schedule. In the current pool, due to limited space, only one type of program can be scheduled for each time block. For example, currently when lap swim is in session, that is the only program that can take place. In the new pool, lap swim, fitness programs and learn to swim programs can be taking place at the same time in different areas of the pool greatly improving capacity and times when programs are offered.



**The project site adjacent to Si View Park has the capacity for future expansion if needed.**

