



## Si View Metropolitan Park District

---

P.O. Box 346  
North Bend, WA 98045

Phone: 425-831-1900  
E-Mail: [sloos@siviewpark.org](mailto:sloos@siviewpark.org)

### **POSITION ANNOUNCEMENT**

**Position:** P/T Seasonal – Park Maintenance II

**Salary:** \$22.50-\$27.68 per hour DOQ

**Opening Date:** January 15, 2025

**Closing Date:** Open Until Filled

**Application:** [www.siviewpark.org/careers.html](http://www.siviewpark.org/careers.html)

### **NATURE OF WORK:**

Under the direction of the Operations Manager, this position assists with the maintenance of District owned or operated park and recreation facilities.

### **ESSENTIAL FUNCTIONS:**

Duties include, but are not limited to, maintenance of trails, paths and sidewalks; maintenance of park facilities including cleaning, painting, weeding, raking, mowing, line trimming, edging and pressure washing; and custodial maintenance at all District maintained buildings. Other duties may include assisting with special event setup and take down, trash collection, routine maintenance and preparation of sports fields including field grooming and lining. This position will likely require some evening and weekend work, with the possibility of a split shift schedule.

### **MINIMUM QUALIFICATIONS**

Knowledge of (position requirements at entry): (A) Semi-skilled building maintenance and repair practices and procedures; (B) Standard hand and power tools and equipment used in custodial work; (C) Methods, tools, materials and equipment utilized in grounds maintenance; (D) Ability to work with minimal or no supervision and (E) Ability to perform heavy manual labor, including bending, stooping, reaching and lifting of materials up to 75 pounds.

Skill in (position requirements at entry): (A) Communicating both orally and in writing, sufficient to exchange or convey information and to receive work direction; (B) Interpreting and applying departmental policies and procedures.

### **EDUCATION AND TRAINING**

High school diploma or equivalent required. Prior work experience in building and park maintenance preferred with a combination of education and experience which provides the necessary knowledge, skills and abilities sufficient to successfully perform the essential duties of the job.

**LICENSES, CERTIFICATES AND REGISTRATION:**

Valid Washington State driver's license with driving record free from serious or frequent violations and proficiency in safe vehicle operation. Adult, Child and Infant First Aid and CPR Certification required within thirty days of employment. Must pass a Washington State Patrol background check.

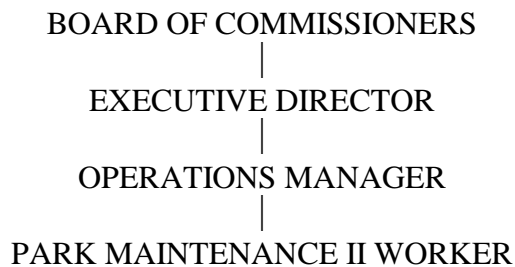
**WORK ENVIRONMENT:**

Work is performed both indoors and outdoors regardless of weather conditions.

**AN EQUAL OPPORTUNITY EMPLOYER**

The Si View Metropolitan Park District is an equal opportunity employer. It is the District's policy to seek and employ the best qualified personnel and to provide equal opportunity for the hiring and advancement of employees, and to administer these activities in a manner which will not discriminate against any person because of race, color, religion, age, gender, sexual orientation, marital status, national origin or disability. The District provides reasonable accommodations to persons with disabilities.

*The statements contained herein reflects general details as necessary to describe the principal functions of this classification, the level of knowledge and skill typically required and the scope of responsibility, but should not be considered an all-inclusive listing of work requirements.*

**ORGANIZATIONAL RELATIONSHIP:**

**ORIGINATION DATE:** March 10, 2016