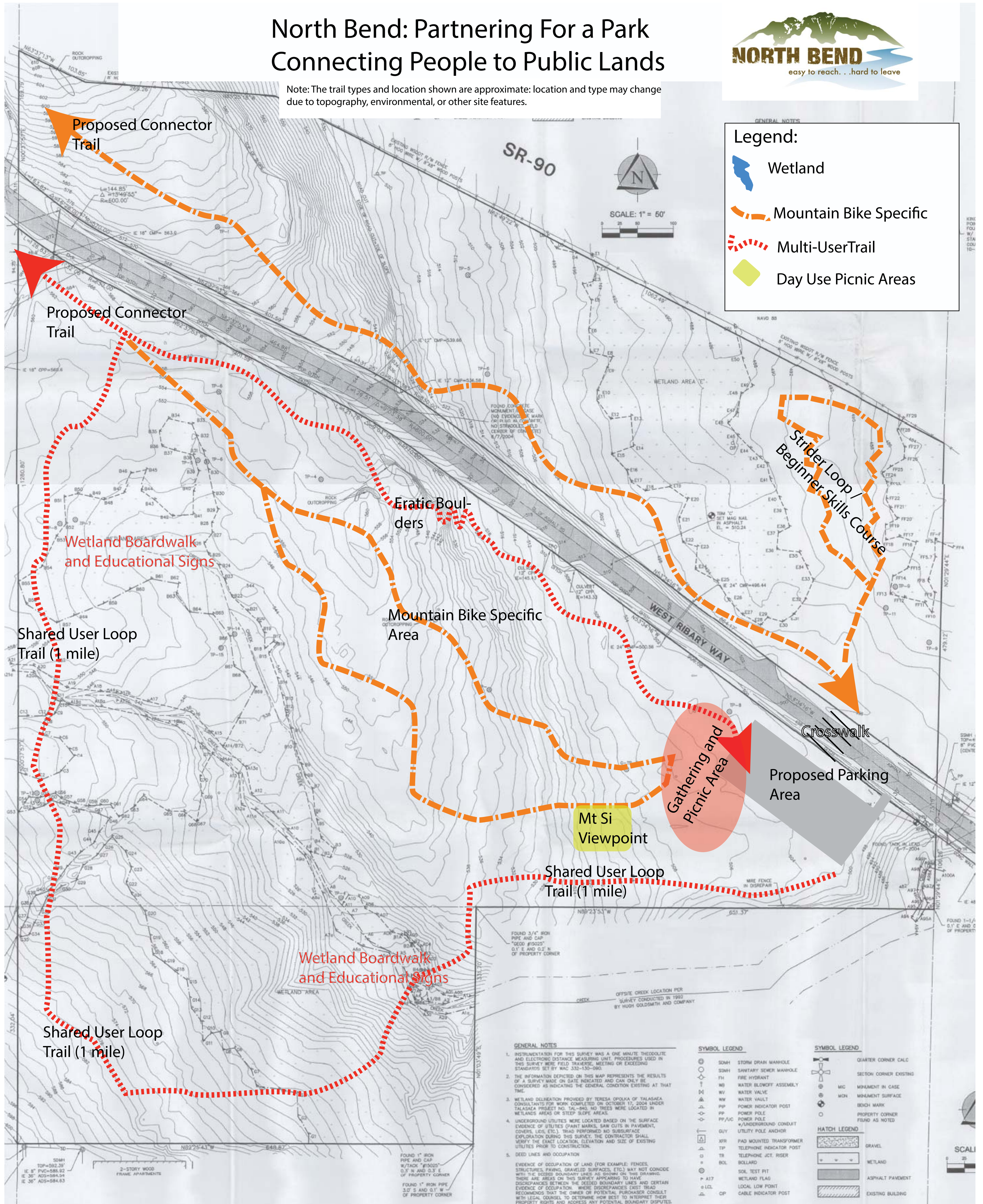


## North Bend: Partnering For a Park Connecting People to Public Lands



Note: The trail types and location shown are approximate: location and type may change due to topography, environmental, or other site features.



### What can we do on the site?

Use of the property is restricted to low impact, passive-use recreation due to grant funding. This means that development of facilities to support organized/structured athletic activities such as ballfields, courts, and gyms is not allowed. (Examples of allowable passive-use recreation include activities such as walking, biking and wildlife observation, all of which have a minimal impact on the ecosystem.)

Future use is limited to non-motorized use, except as necessary for maintenance or parking. A maximum of 15% of the total area may be developed with impervious surfaces (i.e., parking lot, bathroom, picnic gazebo, etc.). Trail surfaces are not included in this calculation.