

INTRODUCTION

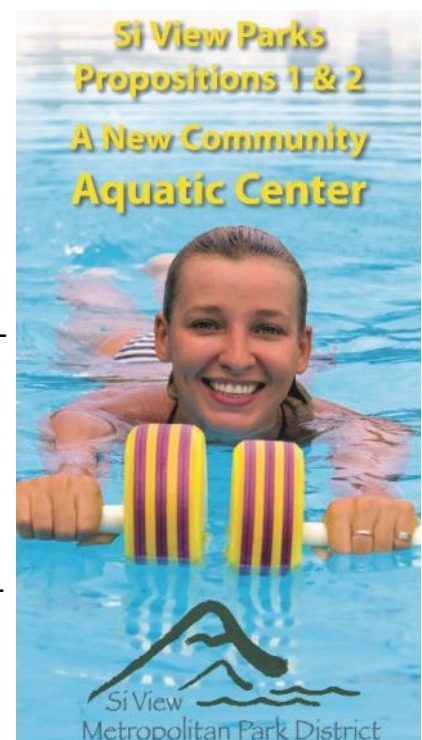
Si View Metro Parks continues to be very committed to providing residents with an option for a locally governed, public aquatic facility. This is a need that has been voiced by District residents in every survey conducted over the last 10 years. We appreciate your ongoing input and support, as we explore options for a facility that aligns our residents' needs with our ability to sustainably operate and maintain one.



Si View Metro Parks operates a pool located at Si View Community Center in North Bend. This pool is undersized for today's community with long waitlists for programming and limited options for expansion. The pool has served the community for over 80 years, and while diligently maintained under Si View management since 2003, it has never seen a complete overhaul of the mechanical systems which are now nearing the end of their lifespan. While it is possible to repair the mechanical systems, expansion of the physical space to meet the needs of our rapidly growing community, is not feasible at the current site. The pool is simply too small to support many of the aquatic programs desired by the District and Snoqualmie Valley residents.

Si View Metro Parks has actively pursued options for a future community aquatic center since 2018. This process began with an extensive feasibility study, guided by community input, demographics and trends analysis to understand our community needs. The collected data was used to determine the type of facility needed, develop a concept plan, and a sustainable operations model.

The District brought a capital bond measure for developing a community aquatic center to District voters in November 2020, in the midst of a global pandemic. This was a two-part measure, a capital bond to fund land purchase, design and construction and an operations levy to support operations and maintenance. The capital measure missed the required super-majority of 60% by a few percentage points while the operations levy passed. Given the strong level of support, staff has continued to explore options for a modified proposal.



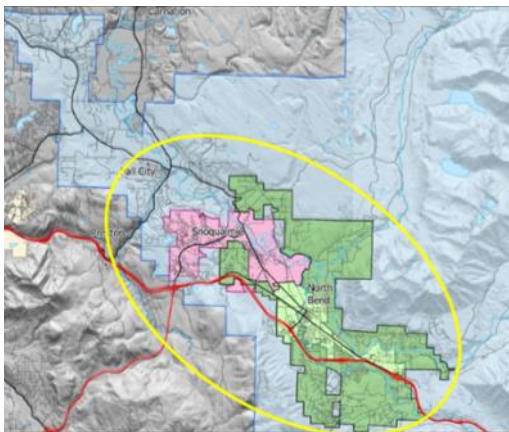
Two key milestones have been reached since November 2020. A **suitable project site in North Bend adjacent to Si View Park has been secured**. The capital investment made through the 2018 Bond funds in this parkland acquisition to support an aquatic facility reduces the needed investment in a future aquatic center proposal. This newly acquired site adjacent to Si View Park sits along our connected trail network and is easily accessible from nearby neighborhoods as well the surrounding communities. The site is also centrally located inside the Park District which was voiced as a priority by District residents last year.



The other key development is a potential new funding source. The King County Parks Levy includes **new aquatic facilities grant program** for agencies such as ours. This program can provide funding support towards both design and construction costs. Additional partnerships are still being pursued along with other potential grant opportunities to help balance the needed community investment.

This project is an investment in the future, for the community by the community. We have reached a point where additional community input is needed to determine next steps. It is time to revisit identified community priorities and confirm that these have not changed.

DEMONSTRATED COMMUNITY NEED



The aquatic center feasibility study confirmed what our community surveys have stated for a number of years – the Residents of Si View Metropolitan Park District have repeatedly expressed their desire for an aquatic facility that adequately meets the needs of our community today and well into the future.

Specifically, a facility that can support a variety of aquatic programming for all ages and abilities including youth, seniors and families is a high priority. Given that District services draw users from the greater Snoqualmie Valley area, finding a centrally located, easily accessible site is critical, not only for ease of access but for forming potential partnerships.

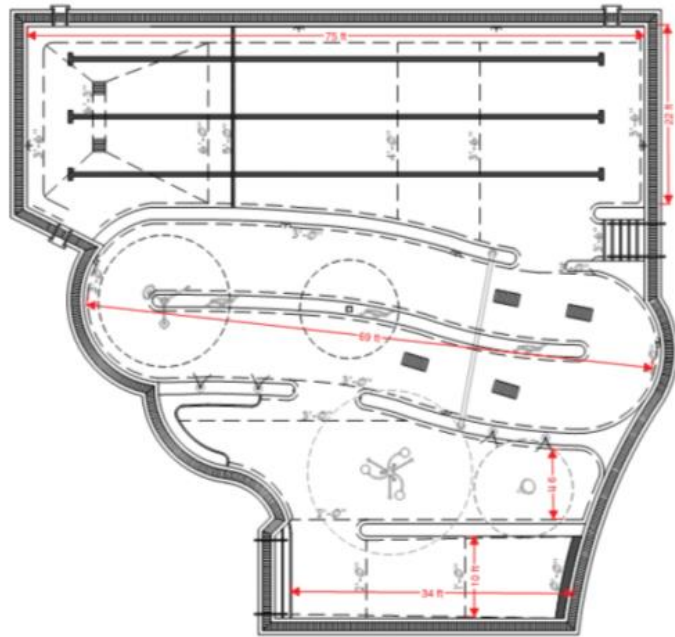
PROPOSAL DETAILS

During the feasibility study, considerable effort was taken to gather community input for desired aquatic center features and prioritize them by demonstrated need. This led to a phased approach proposal with Phase I consisting of a “recreation pool” with a possible later addition of a phase II “competition pool”. The design is such that the pools could operate independently or together. The first phase addresses the most pressing needs while the second phase would allow for larger scale competitions, water sports and training space.



Pool Highlights

- 4,600 Square Feet
- Depths from 0'-0" to 6'-3"
- Beach Entry
- Interactive Water Features
- River Current with Water Features and Sprays
- Flexible 3-Lane 25-Yard Lap Area



SI VIEW METRO PARKS - AQUATIC CENTER FEASIBILITY STUDY
100% SD PRESENTATION | NORTH BEND, WASHINGTON | AUGUST 15, 2019

The phase I Recreation Pool would nearly double the size of our current wet space at Si View Pool, and include programming spaces for aquatic exercise, therapeutic programs, learn to swim classes and leisure play areas. Also included are classroom spaces that can double as party rooms, locker rooms and infrastructure needed for operations. The included 25-yard lap swim lanes can accommodate swim team practices. The design of the pool supports concurrent programming, greatly improving our ability to expand programming and offer activities at more desirable times.





Full build out of phases I and II of the aquatic center require a site that is at least 4 acres in size, centrally located in the Park District, and easily accessible from the greater Snoqualmie Valley communities. The secured site is located adjacent to Si View Park, along the connected trail network. This provides excellent access from nearby neighborhoods as well as from I-90, operational efficiencies with the community center, and shared parking with Si View Park complex. The selected site is also suitable for a potential outdoor splashpad which was identified as a desired feature, as well as buildable space for future administrative offices.

FUNDING SOURCES

While majority of project funding for design and construction will need to come from a capital bond, a new potential funding source has become available recently. King County 2020-2025 Parks Levy includes a new aquatic center grant program for agencies like ours that can help fund both design and construction costs of the project. It is premature to speculate on the cost at this time, as an updated cost estimate will need to be developed later in 2021 based on community input received. The previous capital bond measure for phase I aquatic center development was for \$23.7M in 2020. Partnerships are also being pursued to help balance needed community investment.

WHAT IF WE DO NOTHING?

In addition to the fact that Si View Pool is simply undersized to serve our community today, it is also over 80 years old. The infrastructure has never been fully upgraded. The operating and maintenance costs of such an aging facility incrementally increase each year just to keep the pool doors open. It will need a complete mechanical overhaul in the coming years requiring sizable community investment and a lengthy closure. Given the footprint of the facility, while mechanical repairs can extend the lifespan of the pool, the ability to modify the layout or the capacity to serve our community is not possible. Given these limitations, the feasibility study does not recommend major investment in the current pool.



DO I GET A SAY?

Yes, Park District residents will need to guide our process forward. Based on the community input received, the proposal will be modified (if needed), a new cost estimate developed, and District residents surveyed for their level of support. If these steps support moving the project forward, a bond proposal could be developed as soon as April 2022. From start to completion when funding has been secured, Phase I project timeline is approximately two years.

Not sure if you are a District resident? Visit our website siviewpark.org for the boundary map.

If there is not enough support to move the project forward, we would continue to work with the community for a plan to keep the current pool operational for now.

Join us for a community meeting on Wednesday August 18, 2021 at the Si View Park Picnic Shelter to provide input. You can also complete the short questionnaire on the next page and return it to us directly by September 1, 2021.



Future Community Aquatic Center

COMMUNITY MEETING

Wednesday Aug 18, 6:30pm at Si View Park Picnic Shelter
(event may move indoors due to inclement weather)

Learn more at www.siviewpark.org/newpool.phtml



Thank you!

PROVIDE INPUT TODAY!

The community has continually voiced strong support for a community aquatic center. We are asking for your input to determine how to move forward. What did we miss in the 2020 capital proposal?

Did the pandemic play a role in your decision for our 2020 aquatic center capital proposal?

Are there items in this proposal that are unclear? What questions do you have?

What do you like about this proposal?

Is there anything you would change about this proposal?

Other Comments:

Your contact information (optional)

Name: _____ Phone: _____ Email: _____

We welcome your input, you can provide written comments on this page and return them to the Si View team at the meeting, or reach out to us directly by September 1, 2021:

Email: tstombaugh@siviewpark.org

Phone: (425) 831-1900

Mail: Si View Metro Parks, PO Box 346 North Bend WA 98045

