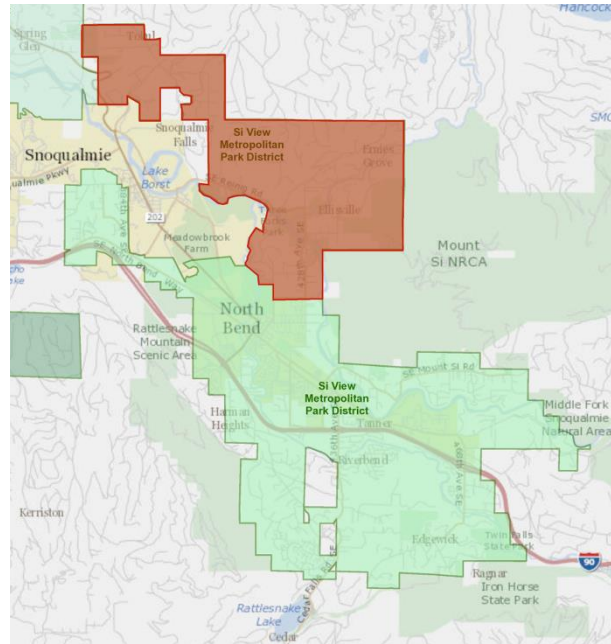


Northern District Listening Session January 29, 2020

Si View Metro Parks staff hosted a community listening session for Northern District residents on January 29, 2020. 14 attendees were present including Si View staff and commissioners.

The purpose of the meeting was to connect with residents to learn about their specific park and recreation needs. The northern section of the Park District is unique in that while it encompasses beautiful natural areas in a more rural setting, connectivity to green spaces has gaps and the area offers no formalized play areas.

The roundtable style discussion focused on identifying both gaps and assets in the park system, and prioritization of needs. Si View staff will continue to collect input from neighbors, research ideas received for feasibility, and identify potential partners prior to developing any plans. Community participation will be critical throughout the process.



The following comments were received at the meeting. Additional comments can be submitted to Minna Rudd by email to mrudd@siviewpark.org or by phone (425) 831-1900.

What are the major park and recreation gaps and challenges in your neighborhood?

- Breaks in trail connectivity, particularly for bikers
- Need for a trail system
- Reinig Road to SVT is unsafe for bikes
- Reinig Road/396th intersection near Meadowbrook Bridge sees lots of users but doesn't have enough safe parking.
- SVT to Tokul Tunnel trail link is missing
- Need for safe walking routes along 428th Street/Pickett
- King County Park open spaces near Three Forks: any additions planned such as play areas?
- Camp Keller near Tokul: what is the plan?
- No formalized playgrounds
- Restoration work along North Fork near holly farm, was it successful, is work complete?
- How do we connect with local community to hear needs?
- Lack of partners
- Policy challenges and varied regulations between different agencies
- Need to understand what public spaces are available
- Need clarification where the Park District boundary is

- Tokul Road bike lane/shoulder is missing - safety concern
- King County Park near Bybee Farm, any plans for development?
- KC Parks parcel near Tokul (Tokul Forest), any plans for connecting to the neighborhood?

What are the major park and recreation strengths and assets of your neighborhood?

- Volume of trails and open space
- Lots of open space nearby
- Potential for partnerships with landowners for improved trail access
- SVT connects to many trails and amenities - strong backbone
- Wealth of open space
- We have existing right of ways that could be used to improve trail connectivity (428th St)
- Great views of Mt Si, spectacular natural features and wildlife
- Tollgate Farm-SVT area has good potential for expanded trail system/park
- Three Forks Park and surrounding natural areas are a great asset
- Elk in the area
- Lots of natural assets, just need to connect trails
- Partnerships
- King County's initiative for equitable access to parks and trails
- Due to flood plain designation, much of the land won't be developed - open space.
- King county has done a good job managing floodways and restoration work in the area.
- Lots of trails, just need connections.

What is your vision of neighborhood parks and recreation services 5 years from now? What projects would you like to see accomplished in your neighborhood?

- coordination of signage for parks and trails by various agencies
- work towards trail connectivity
- Identify and utilize existing assets
- Wildlife viewing area with signage
- Formalized elk viewing area with signage
- Safety in most used areas
- Connecting trails: Reinig-Millpond loop
- What can we do immediately? What funding is available? Who can we collaborate with? Let these guide priorities.
- Connecting natural spaces
- Formalize access to public lands
- Missing SVT link from Reinig Rd to Tokul Tunnel
- Elk herd safety concerns for drivers
- Develop a trails plan based on community input. Adopt a plan. Plan is needed for collaboration and allocation of resources.
- A plan, and work with adjacent agencies for partnerships

- Asset mat
- Fix SVT gaps
- Start with a map